

FEATURES & CONTROLS

①

Controls the amount off Gain.

2

Controls de output level signal.

③

Controls the high and mid frequencies.

④

**Input Jack from Guitar
or other effects.**

5

Output Jack to Amp or other effects.

⑥

**External power suply.
Center Negative. 9V DC**

7

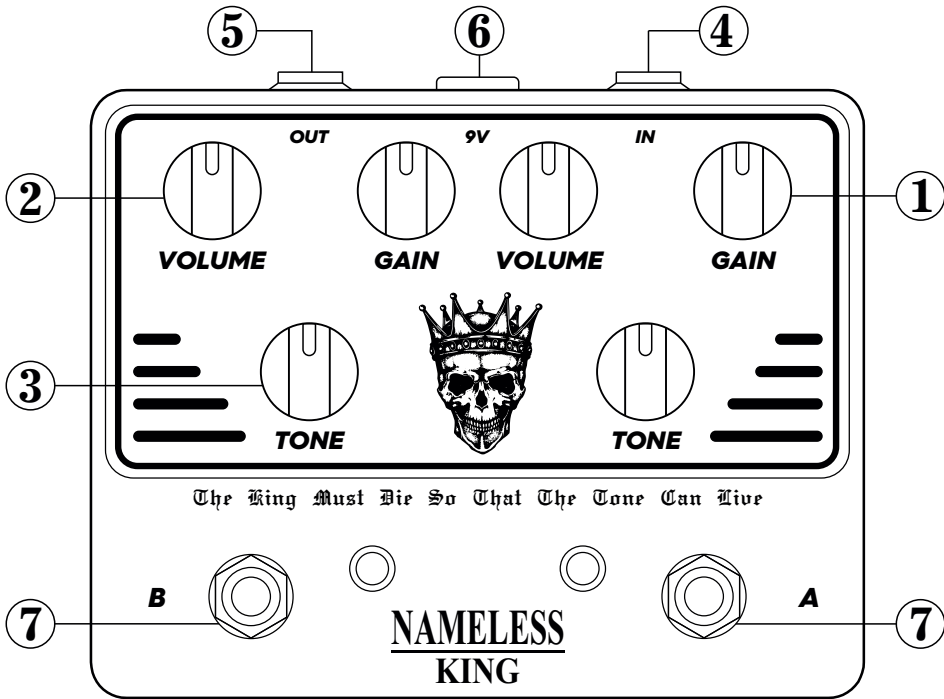
Turn ON and OFF the selected part of the pedal. If you turn ON Section A and B, these are connected in Series.

SPECIFICATIONS

Input Impedance	: 2M Ohm
Output Impedance	: 100k Ohm
Switch	: TRUE BYPASS ON/OFF
Power Supply	: DC 9V (Center Negative)
Power Consumption	: 10mA Max. / 9VDC
Dimensions	: 120(W)x 95(D)x 53(H) mm
Weight	: 370g
Accessory	: Rubber Feet, Manual

POWER

Always use an External Regulated 9V DC Power Supply, with the center pole Negative and the outside barrel Positive. Use a quality and Low Noise power supply for best tonal results.

 $\begin{array}{c} + \\ - \end{array} \text{---} \left(\bullet \right) \text{---} -$ 

WARNING

Stop The Use In Case Of a Problem

- **Stop using the equipment and unplug immediately if you notice smoke and/or a strange odor emanating from it.**

Beware Of Heat Build-up

- **Never cover AC adaptor with cloth or other objects.**

Use Specified AC adaptor Only

- **Be sure to use an AC adaptor that complies with the Power Specifications and polarity.**

Unplugging AC Adaptor

- Never try to unplug AC adaptor while your hands are wet.
- When unplugging AC adaptor from the power source, be sure to grasp the adaptor. Never pull on the cord.

Water, Humidity, Dust and High Temp.

- **Never leave or use the equipment in areas subject to water, high humidity, dust and high temperature.**

Leaving the Equipment Unattended

- Whenever leaving the equipment unattended for long periods, be sure to unplug AC adaptor from the power source.

Delcam Audio

NAMELESS KING

User's Guide

Handmade In Spain
www.delcamaudio.com

FEATURES & CONTROLS

- 1 PRESENCE**

Set the amount off Presence. One for each Circuit.

2 OP AMP

You can Change the Chip. Continue for more information.

3 DIP SWITCH

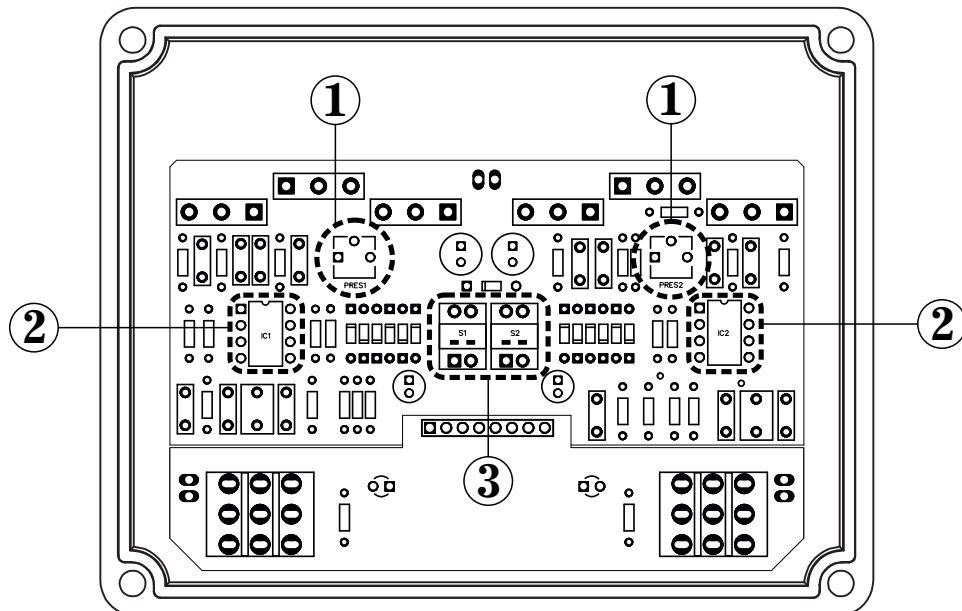
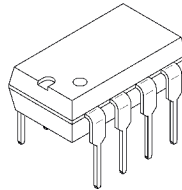
You can choose the diode configuration. Continue for more information.

OP-AMP SELECTION

The NAMELESS KING comes with two RC4558, but you can change those chips for another similar replacement as part of your journey to find your tone. Here we give you some hints about the typical replacement models.

Keep in mind that you can also use different chips between each circuit, so you can have half pedal with RC4558 and the other half with TL072, for example.

- TL072 -- Seems to have a very crisp, chirpy gain character. Fast attack. Very bright and clear sounding. But could be too shrill at times.
- NE5532 -- Seems to have a very cool raspy, ratty, grinding gain character. Yet when in Clean mode, it is still very present, clear and articulate.
- OPA2134 -- Seems to make the pedal a way more open, Hi-fi and articulate. Truly awesome in Clean mode and amazing for cleans.



MAIN FUNCTIONS & OVERVIEW

This is the NAMELESS KING, our humble tribute to one of the most populars pedals using a Brithis Preamp Circuit, the King Of Tone from AnalogMan.

The circuit utilizes two slightly modified Marshall Bluesbreaker™ circuits. You can engage these circuits one at a time, or you can cascade them to work together for high-gain sound.

Because you can run both sides at the same time you can get some great combinations. You can set one side for a slight crunch and the other as a boost. Or set both for different kinds of overdrive tones. You choose and the pedal delivers.

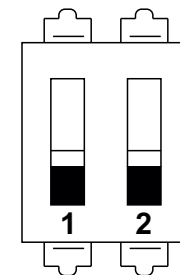
Do not just stay with the front controls. The inner part is the most interesting.

Inside, the onboard DIP switch selects different diode combinations. Also you can set the Presence Control inside the pedal for each circuit. For the creative users, you can change the DIP-8 Onboard OP-AMP's easily with another type of chip as they are socket mounted for easy retrieval.

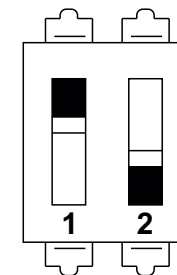
The NAMELESS KING is a must have in your pedalboard. Many combinations and possibilities await as you dive in this easy to use but complex tone machine.

DIP SWITCH POSITIONS AND MODES

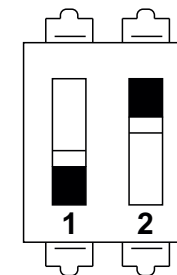
Each half of the circuit has its own double DIP Switch for Mode selection. You can Select between CLEAN or OD mode in switch N°1 and between DISTORTION ON/OFF in switch N°2. So you have a total of 4 different modes on each circuit. We recommend using different settings on each circuit for a more versatile pedal.



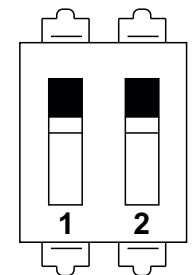
CLEAN MODE
DISTORTION OFF



OD MODE
DISTORTION OFF



CLEAN MODE
DISTORTION ON



OD MODE
DISTORTION ON

The more switches engaged (moved up) will result in more clipping and lower output volume. Experiment to find your desired tone.