

FEATURES & CONTROLS

- 1 CONTROLS**
Sustain, Volume and Tone. Easy.
- 2 FAT**
Controls the amount of bass and deepnees.
- 3 CLIP**
Controls the saturation range. More/None/Less
- 4 INPUT**
Input Jack from Guitar or other effects.
- 5 OUTPUT**
Output Jack to Amp or other effects.
- 6 DC INPUT**
External power suply. Center Negative. 9V DC
- 7 FOOTSWITCH A/B**
Turn ON and OFF the selected part of the pedal. FUZZ must be ON for the OCTAVE to work.

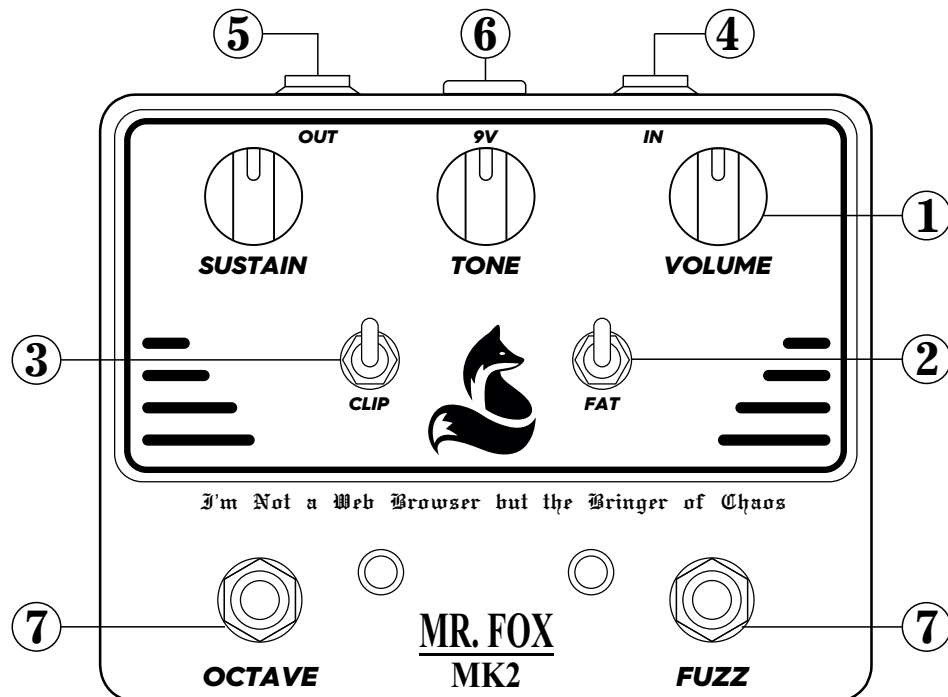
SPECIFICATIONS

Input Impedance : 20k Ohm
 Output Impedance : 50k Ohm
 Switch : TRUE BYPASS ON/OFF
 Power Supply : DC 9V (Center Negative)
 Power Consumption : 10mA Max. / 9VDC
 Dimensions : 120(W)x 95(D)x 53(H) mm
 Weight : 370g
 Accessory : Ruber Feet, Manual

POWER

Always use an External Regulated 9V DC Power Supply, with the center pole Negative and the outside barrel Positive. Use a quality and Low Noise power supply for best tonal results.

9VDC
+ - - -



WARNING

Stop The Use In Case Of a Problem

- Stop using the equipment and unplug immediately if you notice smoke and/or a strange odor emanating from it.

Beware Of Heat Build-up

- Never cover AC adaptor with cloth or other objects.

Use Specified AC adaptor Only

- Be sure to use an AC adaptor that complies with the Power Specifications and polarity.

Unplugging AC Adaptor

- Never try to unplug AC adaptor while your hands are wet.
- When unplugging AC adaptor from the power source, be sure to grasp the adaptor. Never pull on the cord.

Water, Humidity, Dust and High Temp.

- Never leave or use the equipment in areas subject to water, high humidity, dust and high temperature.

Leaving the Equipment Unattended

- Whenever leaving the equipment unattended for long periods, be sure to unplug AC adaptor from the power source.

Delcam Audio

MR. FOX MK2

User's Guide

Handmade In Spain
www.delcamaudio.com

FEATURES & CONTROLS

VOLUME

Adjusts the overall Volume of the pedal. You can get a lot of boosted signal through this effect so this helps to keep it at safe levels.

SUSTAIN

Adjust the overall Gain or Fuzz Effect in to the signal. The more you turn Clockwise, the more clipping you add to the signal.

TONE

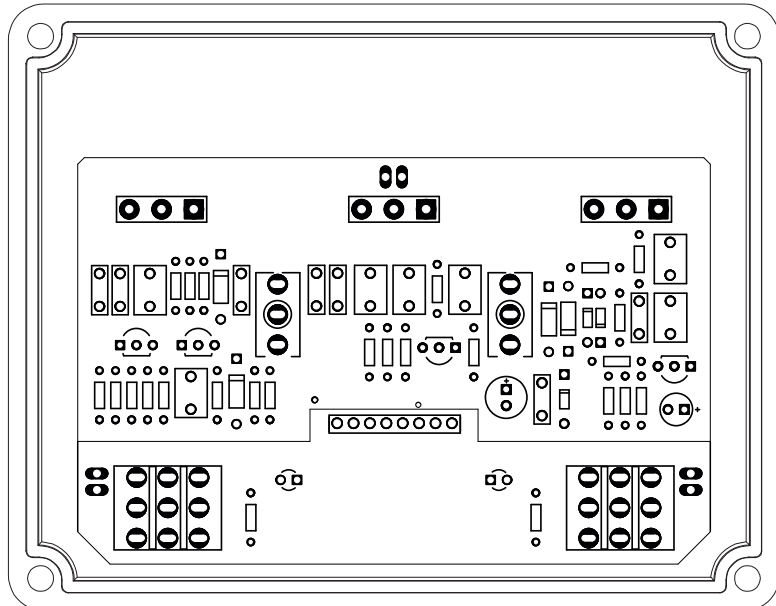
Passive tone control. Clockwise will add more mids and highs, CounterClockise will cut those frequencies and the bass freq. will remain.

OCTAVE

This set ON/OFF the Octave section of the circuit. This is classic Octave Up effect and it has no controls off how to shape this modulation. This part is very responsive to the FUZZ parameters and options.

FAT & CLIP

This selectors let you adjust the overall bass of the effect and set the saturation range of the clipping stage. The mid Positions de-activates the switches, so in the BASS: the lows will vanish an in the CLIP: the saturation will dissapear and the volumen will rise.



MAIN FUNCTIONS & OVERVIEW

This is the MR. FOX MK2, our approach to a hell of a classic FUZZ/OCTAVE ever created, the FOXX Tone Machine. All the good vibes and weirdness awaits !!

The circuit is a straight FUZZ with a lot of classic vibe. It has the right amount of controls to get things done easy but also to be versatile enough. It also has an Octave Up addition to get all the funkiness and weird tunes out of your guitar.

The external switches make this design very versatile. You can eliminate the clipping stage of the FUZZ, to get a fuller and louder sound. You can create a mid-cut and almost a high pass filter with the FAT switch. A lot of options for a variety of sounds... Oh and the Octave is very sensible so all the adjustments in the FUZZ sections will affect the fidelity of the octave modulator.

If you only need a FUZZ, this is gonna blow your mind of how good it sounds. But it also have an Octave Up circuit so... win-win situation !

Anyway, from bassier saturated sounds to slight crunchiness or straight bass-cut machine gun Fuzz sounds... this is awesome to have in your pedalboard.

Delcam Audio

MR. FOX MK2

User's Guide

Handmade In Spain
www.delcamaudio.com