

FEATURES & CONTROLS

- ① **GAIN**
Controls the amount off Gain.
- ② **VOLUME**
Controls de output level signal.
- ③ **TONE**
Controls the high and mid frequencies.
- ④ **INPUT**
Input Jack from Guitar or other effects.
- ⑤ **OUTPUT**
Output Jack to Amp or other effects.
- ⑥ **DC INPUT**
External power suply. Center Negative. 9V DC
- ⑦ **FOOTSWITCH**
Turn ON and OFF the pedal. TRUE BYPASS
- ⑧ **MODE**
D= Distortion C= Clean O= Overdrive

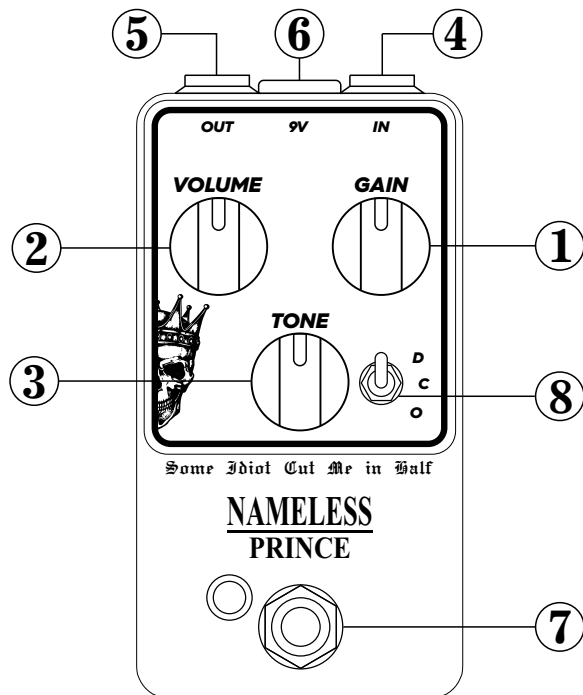
SPECIFICATIONS

Input Impedance : 2M Ohm
 Output Impedance : 100k Ohm
 Switch : TRUE BYPASS ON/OFF
 Power Suply : DC 9V (Center Negative)
 Power Consumption : 10mA Max. / 9VDC
 Dimensions : 112(W)x 60(D)x 50(H) mm
 Weight : 240g
 Accessory : Ruber Feet, Manual

POWER

Always use an External Regulated 9V DC Power Supply, with the center pole Negative and the outside barrel Positive. Use a quality and Low Noise power supply for best tonal results.

9VDC
 + - () -



WARNING

Stop The Use In Case Of a Problem

- Stop using the equipment and unplug immediately if you notice smoke and/or a strange odor emanating from it.

Beware Of Heat Build-up

- Never cover AC adaptor with cloth or other objects.

Use Specified AC adaptor Only

- Be sure to use an AC adaptor that complies with the Power Specifications and polarity.

Unplugging AC Adaptor

- Never try to unplug AC adaptor while your hands are wet.
- When unplugging AC adaptor from the power source, be sure to grasp the adaptor. Never pull on the cord.

Water, Humidity, Dust and High Temp.

- Never leave or use the equipment in areas subject to water, high humidity, dust and high temperature.

Leaving the Equipment Unattended

- Whenever leaving the equipment unattended for long periods, be sure to unplug AC adaptor from the power source.

Delcam Audio

NAMELESS PRINCE

User's Guide

Handmade In Spain
www.delcamaudio.com

FEATURES & CONTROLS

① PRESENCE

Set the amount off Presence.

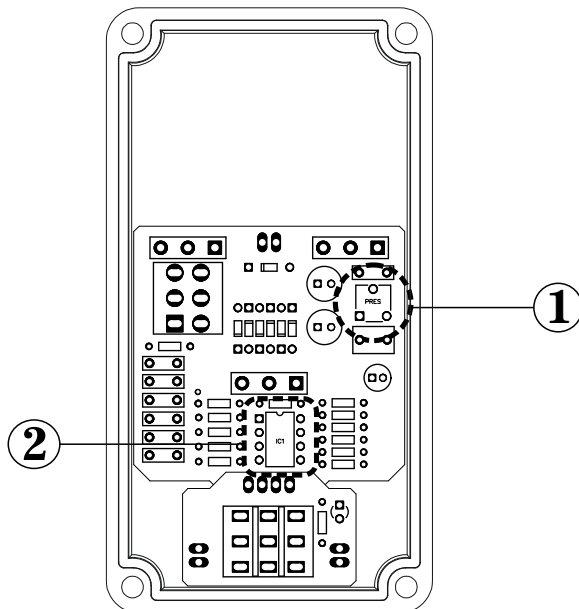
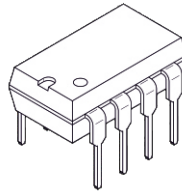
② OP AMP

You can Change the Chip. Continue for more information.

OP-AMP SELECTION

The NAMELESS PRINCE comes with one RC4558, but you can change these chip for another similar replacement as part of your journey to find your tone. Here we give you some hints about the typical replacement models.

- TL072 -- Seems to have a very crisp, chirpy gain character. Fast attack. Very bright and clear sounding. But could be too shrill at times.
- NE5532 -- Seems to have a very cool raspy, ratty, grinding gain character. Yet when in Clean mode, it is still very present, clear and articulate.
- OPA2134 -- Seems to make the pedal a way more open, Hi-fi and articulate. Truly awesome in Clean mode and amazing for cleans.



MAIN FUNCTIONS & OVERVIEW

This is the NAMELESS PRINCE, our single tribute to one of the most populars pedals using a British Preamp Circuit, the King Of Tone from AnalogMan.

This is also an exact single pedal version of our NAMELESS KING.

The circuit utilizes a slightly modified Marshall Bluesbreaker™ circuit. Three easy controls, GAIN, VOLUME and TONE. And a 3 way toggle switch to chose the amount of diodes. You can chose between a Soft Clipping in Overdrive Mode, a Hard Clipping in Distortion Mode and No Clipping and full volume in Clean Mode.

Do not just stay with the front controls. The inner part is also interesting.

You can set the Presence Control inside the pedal and for the creative users, you can change de DIP-8 Onboard OP-AMP's easily with another type of chip as they are socket mounted for easy retrieval.

The NAMELESS PRINCE is a must have in your pedalboard. Many combinations and possibilities await as you dive in this easy to use but complex tone machine.

Delcam Audio

NAMELESS PRINCE

User's Guide

Handmade In Spain
www.delcamaudio.com